



ADC Lite MULTISPECTRAL (NIR) CAMERA

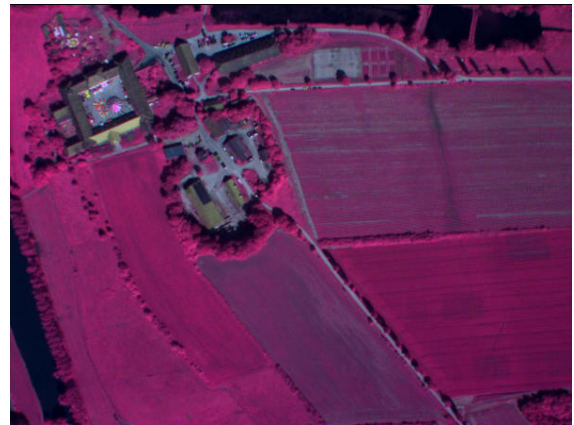
The ADC Lite is a lightweight (7 ounce) version of our ADC Air Camera. This model's light weight qualifies it as an ideal solution for applications in which weight is a critical factor (such as on board small-payload-carrying unmanned aerial vehicles).

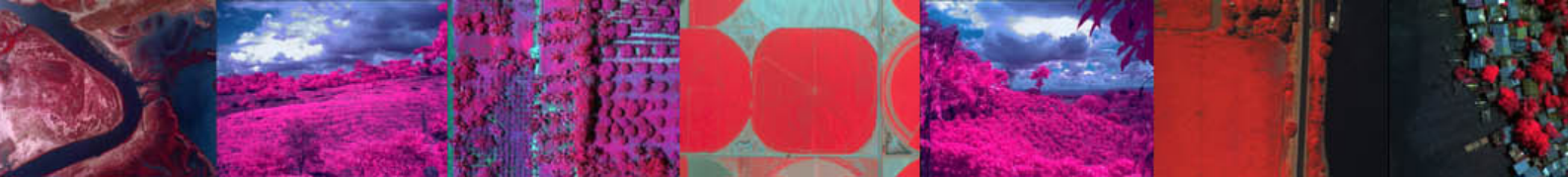


The ADC Lite contains a single 3.2 megapixel sensor optimized for capture of visible light wavelengths longer than 520 nm and near-infrared wavelengths up to 920 nm. The camera and its accompanying software, PixelWrench2, are ideally suited for capturing and processing multispectral images of crops and forests and studying a variety of eco-systems.

PixelWrench2 provides color processing of Tetracam RAW and DCM files, complex batch processing tools, the ability to extract a variety of vegetation indices and a comprehensive suite of image editing tools.

The ADC Lite's field of view (FOV) is laid out in a 4:3 format. When carried in a manned or unmanned aircraft, the field of view increases as the above ground level (AGL) altitude increases. As the altitude increases, the camera's ability to resolve individual details on the ground decreases. With its standard 8.0 mm lens, when flown at altitude of 400 feet above ground level, this camera creates an image large enough to capture 1.85 acres at a resolution of less than two inches per pixel in a single shot!





Technical Specifications

3.2 mega pixel CMOS sensor (2048 x 1536 pixels) Green, Red and NIR sensitivity with bands approximately equal to TM2, TM3 and TM4.

Image storage to CF Card in Tetracam 10 bit DCM lossless, 8 bit RAW, and 10 bit RAW formats

Camera body CS lens mount system with C mount adapter is compatible with thousands of available lenses.

Camera supplied with a 8.0 mm lens

Optional 4.5 - 10 mm varifocal lenses also available.

USB interface.

Image Capture

Image Capture Capacity:

Approx. 3 MB per image (DCM format), limited only by CF card size

From 2 to 5 seconds per picture, depending on file save mode selected

Inputs

+ 9 VDC to + 12 VDC (300 mA) Center Positive

RS-232 dedicated to capture of NMEA GPS sentences.

External Trigger

Outputs

Real-time NTSC or PAL Video for both viewfinder and menu operations

Data Interface

USB 1.1

Dimensions

4.5 in. x 3.0 in. x 0.87 in. (114 mm x 77 mm x 22 mm) without the 8.0 mm lens.

4.5 in. x 3.0 in. x 2.38 in. (114 mm x 77 mm x 60.5 mm) with 8.0 mm lens.

Weight: 200g

System Includes

- ADC Lite Camera
- 2GB CF memory card
- 8.0 mm "C" mount lens
- Rugged Pelican Carrying Case
- 12 VDC external power supply
- External power cable (un-terminated on one end)
- External Trigger Cable (un-terminated on one end)
- USB Cable
- Calibration tag (Software Calibration Tile)
- System CD with PixelWrench2 software (PW2)

Options

GPS guided camera triggering with SensorLink Software



VISION ASIA TECHNOLOGY PTE LTD
14 ROBINSON ROAD#13-00 FAR EAST FINANCE BUILDING
SINGAPORE 048545

PHONE: +65-6451-1857 FAX: +65-6323-1839

INFO@VISIONASIA.COM.SG

WWW.VISIONASIA.COM.SG