



ADC Air MULTISPECTRAL (NIR) CAMERA

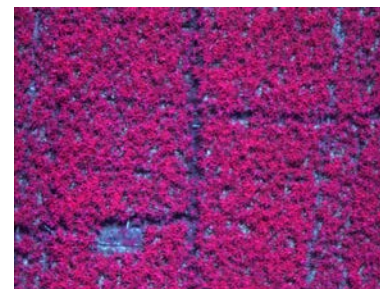
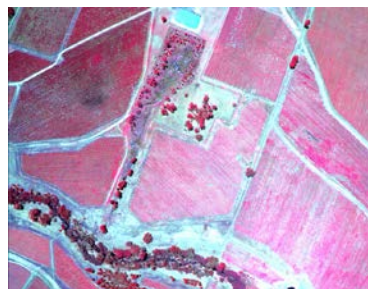
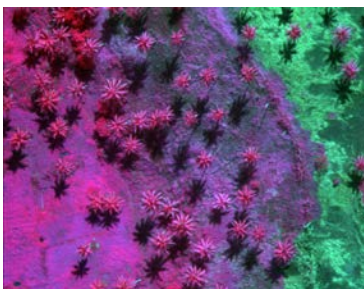
Re-engineered to be the simplest and most flexible visible and NIR camera available. The latest generation ADC has improved resolution, faster performance, greater capacity and new features all in a ruggedized weatherproof enclosure.



3.2 mega pixel image size for excellent ground resolution



Video out and standard GPS data capture from an external receiver, all controls and I/O are through a single cable, if desired.



This special version of the third generation ADC stands on the shoulders of the previous 1.3 mega pixel camera in use worldwide. It offers higher ground resolution and improved spectral accuracy along with greater flexibility of operation and control. Red, Green and NIR bands (approximating TM2, TM3 and TM4) provide the information needed for extraction of NDVI, SAVI, canopy segmentation and NIR/Green ratios. Standard GPS data capture from an external receiver adds position data to your image. This package was developed for use in wet and otherwise harsh environments. The ADC Air is ideal for UAV and external mounting on manned aircraft. Waterproof doors on either end allow access to the CF card and the standard connector panel. In normal use, all power and I/O is passed thru the multi-function cable. A sealed screw on hood seals the lens from the environment.



Technical Specifications

3.2 mega pixel CMOS sensor (2048 x 1536 pixels) Green, Red and NIR sensitivity with bands approximately equal to TM2, TM3 and TM4.

Image storage to CF Card in Tetracam DCM lossless format Tough CNC machined aluminum housing.

CS lens mount system compatible with thousands of available lenses. Camera supplied with a 8.5 mm lens.

8 internal AA size batteries.

USB interface.

Multipin I/O connector for use with Tetracam Videoviewer accessory.



Image Capture

Capacity: Approx. 1mB per image, limited only by CF card size.

Rate: Single Shot - Capture to end of compression and write: 12 sec.

Burst Mode - 1 frame every 2 seconds until buffer full.

Inputs

5 - 12 VDC

Rs-232 dedicated to capture of NMEA GPS sentences

External Trigger



Outputs

Real-time NTSC or PAL Video for both viewfinder and menu operations

Data Interface

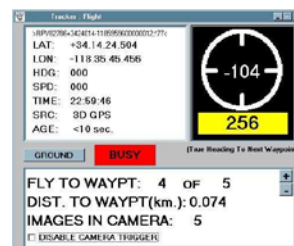
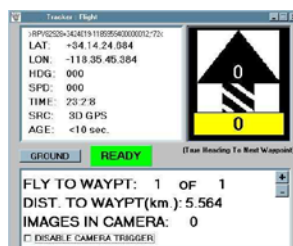
USB 1.1

Dimensions

122 x 78 x 41mm without lens

340 g without internal batteries

520 g with alkaline AA batts



System Includes

- ADC Air Camera w. 8.0mm C mount lens
- 2 GB CF card
- PixelWrench 2 Software (Windows)
- 12V AC power adapter
- 12V DC power/trigger cable
- USB cable
- User's Guide
- Calibration tag
- Pelican hard case

Options

Videoviewer displays the camera videostream and provides full camera control. This 6.5" (165mm) display system was designed specifically for use with the ADC and MCA cameras.

GPS guided camera triggering with SensorLink Software



VISION ASIA TECHNOLOGY PTE LTD
14 ROBINSON ROAD#13-00 FAR EAST FINANCE BUILDING
SINGAPORE 048545

PHONE: +65-6451-1857 FAX: +65-6323-1839

INFO@VISIONASIA.COM.SG

WWW.VISIONASIA.COM.SG